

For the best selection of refrigeration products visit your local Liebherr authorised dealer.

Our catalogues

Find out everything you need to know about Liebherr built-in appliances in the latest catalogue. In addition our special brochures contain comprehensive information about our BioFresh, FoodCentres and wine cabinet ranges. Available in printed format from retailers or as a PDF download from www.myliebherr.co.uk. On our website, our online consultant will help you find the appliance that's right for you in just a few steps. Further information about BioFresh, NoFrost and wine cabinets may be obtained via the QR codes on the topic websites.



biofresh.liebherr.com



nofrost.liebherr.com



wine.liebherr.com

Interesting Apps

From appliance selection to wine recommendations, there's an app just for you.

Now available in the App Store (search term: Liebherr).

The BioFresh app is now available as an Android version on Google Play.



IceCrusher



WineGuide



BioFresh



Kitchen Photo Designer

Your local Liebherr authorised dealer will help you make the right choice of refrigeration for your lifestyle.



MIX
Paper from
responsible sources
FSC® C010264
www.fsc.org

Subject to modification. Printed in Germany by
Raff Media Group GmbH, 7944 254-02/4/02.13



Wine
Special 2013





Fully developed for the enjoyment of wine

Where wine is concerned, correct temperatures are always important. From the air temperature which ensures perfect growth of the grapes, to that which governs the aging processes in production, to the balanced temperature for storage of the finished wine. Above all, temperature ultimately defines a wine's taste and palate - the serving temperature will determine how much it is savoured and enjoyed.



Content

Ideal storage temperature	06
Optimum air quality	08
Best position for fine wines	10
Protection against UV light	12
The Vinidor range	16
Wine storage cabinet GrandCru	22
Wine storage cabinets Vinothek	30
Multi-temperature Vinothek	36
Accessoires	38

The ideal storage temperature for wine

___ The ideal storage temperature for wine is between + 10 °C and + 12 °C. It is critical that the temperature is kept as constant as possible because this is the only way that a wine's natural harmony will be preserved. ___

As the temperature rises, the wine molecules kinetic energy increases and this accelerates the aging process causing the wine to deteriorate. Consequently, storage temperatures of between +10°C and +12°C are recommended for storing wine over prolonged periods. Maintaining a constant temperature is most important, as fluctuations during storage will impair the quality of the wine. Furthermore, the temperature at which a wine is consumed also plays a crucial role in how it tastes. Red wines should be served at a warmer temperature than white wines because they contain more tannins (polyphenols).

Tannins react with oxygen more quickly at higher temperatures. This is what happens in the process of allowing a wine to »breathe«, when the full aroma and taste are only achieved once the wine has combined with oxygen. The length of time for which a wine should breathe depends on its variety and quality. Barolo, Rioja, Burgundy and Bordeaux each take a different amount of time to develop. In general, the longer a wine matured in the barrel, the more likely it is to need a longer breathing time for full enjoyment.

Perfect storage and temperature control with Liebherr

Electronic control system. Liebherr's highly precise electronic control systems and advanced air conditioning technologies guarantee appliances maintain a constant interior temperature, even in the event of major fluctuations in the ambient temperature.

Long-term storage. With constant temperatures and a perfectly controlled climate, Liebherr's wine storage cabinets and Vinidor models provide the very best conditions for wine to age without disturbance, and to develop fully during storage.

Optimum drinking temperature. In our Vinidor wine cabinets, which offer two or three wine safes, different wines can be stored according to their ideal serving temperature. Each wine safe can be independently programmed to between +5°C and +20°C, giving great storage flexibility.

In the multi-temperature wine cabinets in our Vinothek range, specialised climate technology is used to achieve temperature stratification within the appliance. Lower temperatures in the bottom section are ideal for sparkling wines and champagne, whereas a temperature of about +18°C in the upper section is perfect for red wines. Meanwhile, the temperature in the middle section brings white wines to an ideal serving temperature.



Optimum air quality

___ The quality of the ambient air is essential if the wine is to develop fully and be enhanced during storage – any airborne contaminants can be transferred to the wine and spoil it. ___

Classic natural corks very adequately keep the wine in the bottle, but in no way do they hermetically seal it. As a result, air, which is far more than odourless oxygen, infiltrates the bottle passing down the edges of the cork. If the bottles are stored in a cardboard box, the wine can take on the odour of the cardboard. But food odours in particular present problems. When storing wine at home, especially in a kitchen

environment, wines will almost certainly lose their »terroir and type« characteristics – i.e. they will spoil! Although glass stoppers and screw caps provide airtight closures for bottles, wines inevitably age more slowly because only the oxygen in the bottle is available to them. Synthetic corks allow too much air into the bottle, making them much less suitable for long-term storage of wine altogether.

Optimum air quality with Liebherr

Optimum air-freshness. All Liebherr wine cabinets are fitted with activated-charcoal filters, which ensure optimum air quality within the appliance. The active-charcoal reacts with any contaminants, binding them to its surface, and thereby filtering them from the incoming-air. This prevents odours from the ambient air affecting the taste of the wines stored in the interior. In our Vinidor appliances, each wine safe has its own separate activated-charcoal filter. Filters should ideally be replaced once a year. They can be ordered as an accessory and are convenient to replace.

Ideal humidity. If wines are to be stored for prolonged periods, the correct humidity is essential. At humidity levels below 50%, even the best natural corks start to shrink. This allows more and more oxygen to penetrate the bottle, and evaporation to occur; and, as the fill level drops, oxidation increases. Wines become gradually sweeter until they spoil completely. However, with humidity levels of at least 50%, Liebherr wine cabinets ensure the best conditions for both corks and wine. Thanks to an impressive vaporiser system and specially regulated air circulation, high humidity levels are sustained in all wine storage cabinets.

Our Vinothek multi-temperature wine cabinets, with stratified temperature zones, are fitted with porous lava stone, which controls humidity within these appliances.



Best position for fine wines

___ For perfect storage the wine should not be disturbed. ___

Even small vibrations caused by the noise of machinery, road traffic or frequent footfall can harm old wines. The wine is imperceptibly »shaken up«, and the sediment is disturbed. This leads to increased reactions between the different components of the wine, which then creates undesirable compounds that leave the wine tasting odd and

inharmonious – something like what is seen straight after the filling process. Wine bottles are usually stored lying down so that their corks are constantly moistened and cannot dry out. On the other hand, bottles with screw caps or glass stoppers can be stored upright without any problem as they provide an airtight seal for the wine.

Optimum storage with Liebherr

Protection against vibrations. The specially developed, low-vibration compressors used in Liebherr wine cabinets provide gentle storage conditions. In the new Vinidor wine cabinets, the entire refrigeration system is fully vibration dampened to minimise vibration transmission. Accordingly, appliances make very little operating noise, and the wine can be stored with minimal disturbance.

Optimum position. Wine is able to age in peace on stable, handcrafted wooden shelves. These shelves are unvarnished so that varnish vapours do not damage the wine. The wooden shelves are ideal for safely storing Bordeaux bottles, and positioning the wine bottles in opposite directions on the shelves allows optimum use of the appliance's capacity. In the Vinidor appliances, the wooden shelves are fitted to telescopic rails to provide a clear overview of the bottles, and to ensure easy access – even to those at the back. The presentation shelf is ideal for showcasing fine wines and also maintains opened bottles at a perfect temperature.

Soft closing. The door closes softly and automatically on reaching an opening angle of about 45° to prevent any vibrations that could damage the wine.



Protection against ultraviolet light

___ Most wine bottles are tinted as ultraviolet rays pose a danger to all wines. ___

Light, in particular the invisible rays from the ultraviolet spectrum, is a common cause of undesirable chemical reactions in wines. The consequences of light-damage are visible to the eye: pale red wines, and white wines that take on a golden-yellow colour. »Light-strike« (or »Goût de Lumière« as the French know it) destroys the wine's balance and flattens its aroma and, to avoid it, most producers

bottle their wine in brown or green glass, which absorbs a great deal of the UV rays. However, this alone is not enough for bottles that are not stored in the dark. Slight temperature increases caused by light radiation can also damage the wine – they make it age quicker thereby altering the natural development processes, even to the extent that the wine can be permanently destroyed.

UV protection with Liebherr

Insulated glass doors with UV protection. To minimise the effects of UV rays, Liebherr wine cabinets are fitted with special UV-resistant insulation glass. The UV protection is provided by a special dual-pane structure, which incorporates an inner, tinted-glass pane and an outer, metallised, low-E (low-emittance) pane. This glass composite reflects nearly all the damaging UV radiation and prevents any deterioration of the wine.

LED lighting concept. This innovative technology ensures that the interior of the appliance is evenly lit without any UV radiation, as the LED light spectrum does not contain any UV rays. Furthermore, because of minimal heat generation with LEDs, the wines can be illuminated and beautifully presented for much longer without any localised heating of the bottles.

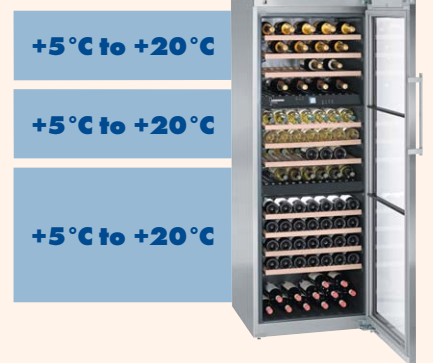




Vinidor range

Vinidor Side 16

The Vinidor range offers ultimate flexibility and combines the advantages of both wine storage cabinets and multi-temperature wine cabinets in a single appliance. Appliances in the range come with either two or three temperature zones, which can be set independently to the required temperature between +5°C and +20°C. Accordingly, an appliance with three temperature zones can simultaneously store red wine, white wine, and champagne all at their optimum serving temperature. Vinidor appliances also offer the perfect climate for long-term wine storage. The varying sizes of the temperature zones, together with the fully adjustable temperature controls, make these appliances suitable for just about any collection of wines.



Wine storage cabinets

GrandCru Side 22 Vinothek Side 30

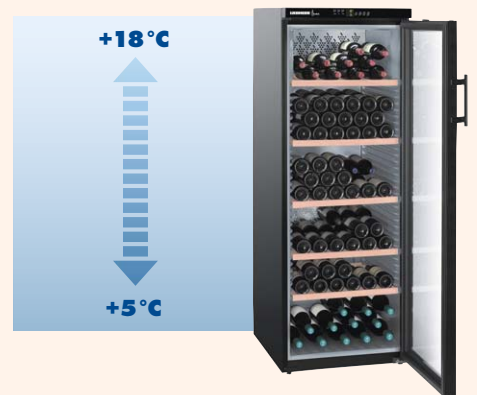
Wine storage cabinets offer similar conditions to a wine cellar. They are therefore an ideal choice for both long-term storage and storage of large wine stocks, always achieving the perfect serving temperature. The temperature can be adjusted from +5°C to +20°C as appropriate, and is both even and constant throughout the entire appliance interior.



Multi-temperature wine cabinets

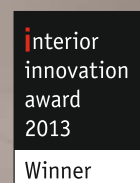
Vinothek Side 36

Multi-temperature wine cabinets from the Vinothek range offer versatile storage for different types of wine, each at its perfect drinking temperature. The innovative climate technology that we use creates temperature stratification within the appliance. As a result red wine can be stored in the upper section at +18°C; in the lower section a temperature of +5°C is ideal for storing sparkling wine or champagne; and in the middle section the temperature is perfect for white wine.



Vinidor range

The Vinidor range offers ultimate flexibility and combines the advantages of both wine storage cabinets and multi-temperature wine cabinets in a single appliance. Appliances in the range come with either two or three wine safes, which can be set independently to the required temperature between +5°C and +20°C. Accordingly, an appliance with three wine safes can simultaneously store red wine, white wine, and champagne all at their optimum serving temperature. Vinidor appliances also offer the perfect climate for long-term wine storage. The varying sizes of the wine safes, together with the fully adjustable temperature controls, make these appliances suitable for just about any collection of wines.





The electronic LCD display is an innovative design feature. Clear menu navigation and a **Touch-electronic control system** provides yet more information for tailored storage conditions. The digital temperature display can be read from the outside of appliances with glass doors. The Touch-electronic navigation ensures easy selection and use of the numerous control functions.



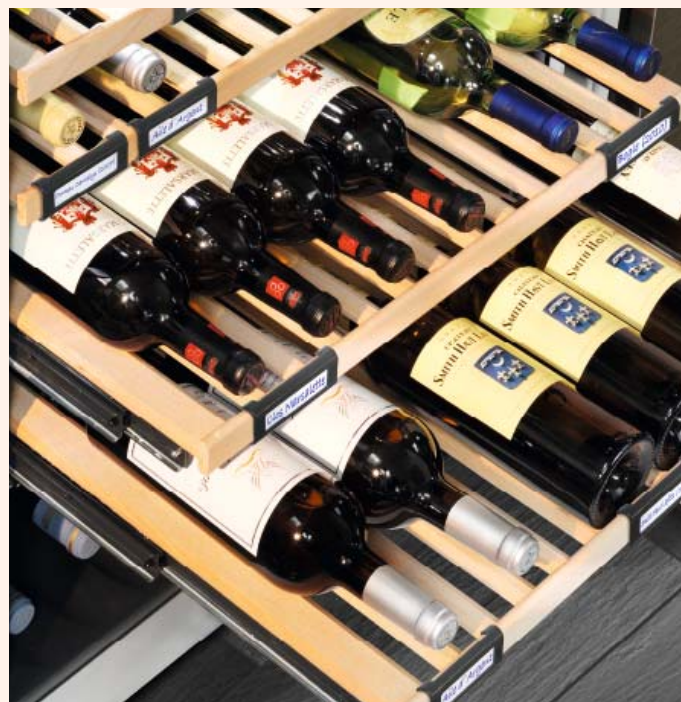
The **LED lighting in the wine cooling compartments can be dimmed** to give a pleasing ambient light inside the appliance. All Vinidor appliances are equipped with this innovative, no-heat LED lighting concept.



The **tinted safety glass** in the Liebherr wine cabinets guarantees the essential UV protection for your fine wines. The practical **aluminium door handle, with integrated opening mechanism**, allows the door of the appliance to be opened conveniently with a minimum of effort.



The integrated **lock** is exceedingly sturdy and protects against unauthorised access.



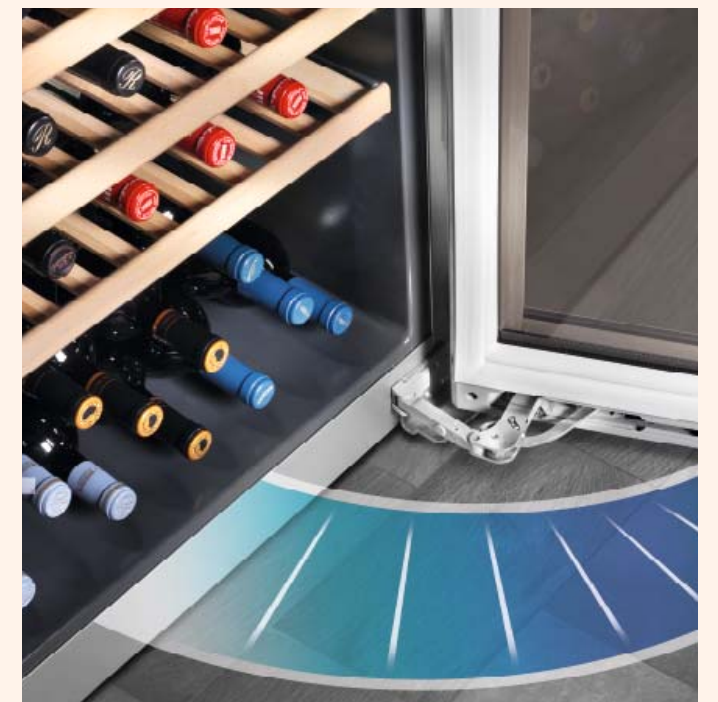
The Vinidor appliances are equipped with solid **wooden shelves mounted on telescopic rails**. The handcrafted shelves made from untreated wood are ideal for storing Bordeaux bottles safely, providing a clear view and easy access. Storing the bottles in opposite directions permits full use of the capacity. The **clip-on labelling system** provides a quick and clear overview of your wine store.



The practical **presentation shelf** of the Vinidor models fulfills both bottle storage and bottle presentation functions. The bottles can be stored horizontally at the rear.



The fresh air supplied through the **activated charcoal filter** and re-circulating air cooling system ensures optimal air quality. This is crucially important for the maturing process and preservation of the wine. Charcoal filters are replaceable.



The **SoftSystem** feature provides added safety and convenience. Integrated on the door, the SoftSystem cushions movement when the door is closed. This SoftSystem ensures that the door closes gently even when fully loaded inside. The door automatically closes from an angle of approximately 45°.



Vinidor range	WTes 5872 Vinidor	WTes 5972 Vinidor	WTpes 5972 Vinidor	WTEes 2053 Vinidor	WTI 2050 Vinidor	WTes 1753 Vinidor	WTUes 1653 Vinidor
Max. No. of Bordeaux bottles 0.75 Ltr ¹	178	211	155	64	64	40	38
Total gross/net capacity	578/505 litre	593/526 litre	593/528 litre	195/187 litre	195/187 litre	136/135 litre	127/126 litre
Energy efficiency class				<A>	<A>	<C>	<C>
Energy consumption in 365 days/24 h ²	245/0.670 kWh	248/0.679 kWh	248/0.679 kWh	155/0.424 kWh	140/0.383 kWh	252/0.688 kWh	250/0.683 kWh
Noise level	38 dB(A)	38 dB(A)	38 dB(A)	39 dB(A)	39 dB(A)	43 dB(A)	43 dB(A)
Climate rating ³	SN-ST	SN-ST	SN-ST	SN-ST	SN-T	SN-ST	SN-ST
Voltage/Connection rating	220-240V~/2.0 A	220-240V~/2.0 A	220-240V~/2.0 A	220-240V~/1.2 A	220-240V~/1.2 A	220-240V~/0.8 A	220-240V~/0.8 A
Door	Insulated glazed door S/Steel frame	Insulated glazed door S/Steel frame	Insulated glazed door S/Steel frame	Insulated glazed door S/Steel frame	Full door	Insulated glazed door S/Steel frame	Insulated glazed door S/Steel frame
Side walls	stainless steel	stainless steel	stainless steel	silver	silver	stainless steel	silver
Wine storage compartment							
Temperature zones/-range	3/+5°C to +20°C	2/+5°C to +20°C	2/+5°C to +20°C	2/+5°C to +20°C	2/+5°C to +20°C	2/+5°C to +20°C	2/+5°C to +20°C
Adjustable cooling circuits	3	2	2	2	2	2	2
Type of control/display	LCD Display/internal digital	LCD Display/internal digital	LCD Display/internal digital	MagicEye/internal digital	MagicEye/internal digital	MagicEye/internal digital	MagicEye/internal digital
Forced air system	•	•	•	•	•	•	•
Defrosting	Automatic	Automatic	Automatic	Automatic	Automatic	Automatic	Automatic
Interior light	LED	LED	LED	LED	LED	LED	LED
permanently activated/dimmable	•/•	•/•	•/•	•/•	•/•	•/•	•/•
Shelf material	wooden shelf	wooden shelf	wooden shelf	wooden shelf	wooden shelf	wooden shelf	wooden shelf
Storage shelves	13	10	6	6	6	6	5
running on telescopic rails	10	8	5	4	4	4	3
Presentation shelf	1	1		2	2		
Pull-out shelf for upright bottles			2				
Fault: warning signal	visual and audible	visual and audible	visual and audible	visual and audible	visual and audible	visual and audible	visual and audible
Door open: warning signal	audible	audible	audible	audible	audible	audible	audible
Child lock function	•	•	•	•	•	•	•
Dimensions							
Exterior/Aperture dimensions in cm (h/w/d ⁴)	192/70/74.2	192/70/74.2	192/70/74.2	122.1-122.5/56-57/at least 55	122-123.6/56-57/at least 55	85/59.7/58.6	82-87/60/at least 58
Features							
Interface	HomeDialog-ready	HomeDialog-ready	HomeDialog-ready				
Design	HardLine	HardLine	HardLine			HardLine	
SoftSystem	•			•	•		
Slimline door handle	Aluminium handle	Aluminium handle	Stainless steel slimline door handle	Stainless steel slimline door handle	Stainless steel slimline door handle	Stainless steel slimline door handle	Stainless steel slimline door handle
with integrated opening mechanism	•	•					
Door hinges	right, reversible	right, reversible	right, reversible	right, reversible	right, reversible	right, reversible	right, reversible
Lock	•	•	•	•	•	•	•
Low-vibration compressor	•	•	•	•	•	•	•
Accessories (see page 38/39)	01, 04, 06, 07, 09, 10, 11	01, 04, 06, 07, 09, 10, 11	01, 06, 07, 09, 10, 11	01, 06, 09, 10	01, 06	01, 06, 09, 10	01, 06, 09, 10

¹ These models are only intended for storing wine. Maximum DIN norm bordeaux bottles capacity (0.75 l) as per norm NF H 35-124 (H: 300.5 mm, Ø 76.1 mm)

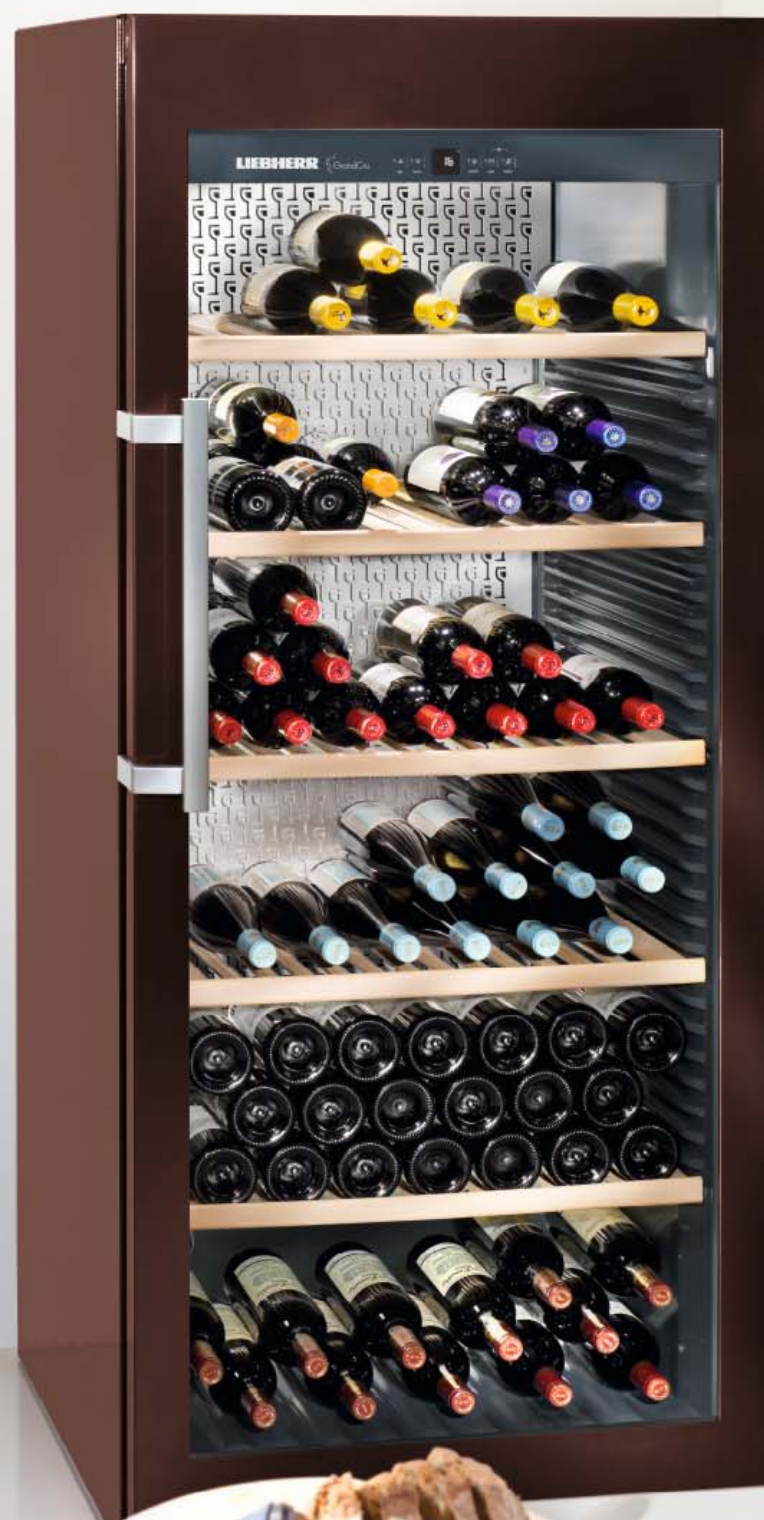
² With +25°C ambient temperature, switched-off interior light and +12°C interior temperature. Commission Delegated Regulation (EU) No 1060/2010

³ Climate Ratings: SN +10°C to +32°C N +16°C to +32°C
ST +16°C to +38°C T +16°C to +43°C

⁴ incl. distance from wall

Wine storage cabinets GrandCru

Wine storage cabinets can be set to exactly the temperature required within the range of +5 °C to +20 °C. This ensures that the selected temperature is maintained constantly and uniformly throughout the interior. Our wine storage cabinets are ideal for storing wines for long periods of time to allow them to mature to perfection. Depending on what temperature the appliances are set to, they can also be used for keeping white wine or red wine at exactly the right temperature for serving.



Wkt 4552



The precision **electronic control system** is clearly arranged in the insulation plate. The digital temperature display can be read from the outside of appliances with glass doors. The door and temperature alarm alerts the user to any irregularities, e.g. a door that has been left open. The child lock prevents any inadvertent changes to the control system.



The **LED lighting** in the wine cooling compartments can be dimmed to give a pleasing ambient light inside the appliance. For ideal presentation of your best wines, the interior light with separate switch in appliances with glazed door.



The **tinted safety glass** in the Liebherr wine cabinets guarantees the essential UV protection for your fine wines. The practical **aluminium handle, with integrated opening mechanism**, allows the door of the appliance to be opened conveniently with a minimum of effort.



The integrated **lock** is exceedingly sturdy and protects against unauthorised access.



The **bottle shelves, made of untreated wood** are variably height-adjustable to provide an optimum overview and a clear storage layout. The bottles can be stored in opposite directions to make full use of the capacity. The wooden shelves are designed to safely hold Bordeaux bottles.



The **clip-on labelling system** provides a quick and clear overview of your wine store. The labelled cards can be easily inserted into the clips which can be attached as required.



The practical **presentation shelf** of the Vinidor models fulfills both bottle storage and bottle presentation functions. The bottles can be stored horizontally at the rear.



The fresh air supplied through the **activated charcoal filter** and re-circulating air cooling system ensures optimal air quality. This is crucially important for the maturing process and preservation of the wine. Charcoal filters are replaceable.



Wine storage cabinets GrandCru	WKt 6451 GrandCru	WKt 5552 GrandCru	WKt 5551 GrandCru	WKes 4552 GrandCru	WKt 4552 GrandCru	WKt 4551 GrandCru	WKUes 1753 GrandCru	WKes 653 GrandCru
Max. No. of Bordeaux bottles 0.75 Ltr ¹	312	253	253	201	201	201	59	12
Total gross/net capacity	666/625 litre	573/525 litre	547/499 litre	478/435 litre	478/435 litre	456/413 litre	144/133 litre	56/38 litre
Energy efficiency class	<A>	<A>	<A>	<A>	<A>	<A>		<A>
Energy consumption in 365 days/24 h ²	143/0.391 kWh	179/0.490 kWh	141/0.386 kWh	171/0.468 kWh	171/0.468 kWh	136/0.372 kWh	179/0.490 kWh	103/0.280 kWh
Noise level	44 dB(A)	41 dB(A)	41 dB(A)	41 dB(A)	41 dB(A)	41 dB(A)	42 dB(A)	41 dB(A)
Climate rating ³	SN-T	SN-ST	SN-T	SN-ST	SN-ST	SN-T	SN-ST	SN
Voltage/Connection rating	220-240V~/2.0 A	220-240V~/1.5 A	220-240V~/1.5 A	220-240V~/1.2 A	220-240V~/1.2 A	220-240V~/1.2 A	220-240V~/0.8 A	220-240V~/0.5 A
Door	Full door, terra	Insitd glazed door, terra frame	Full door, terra	Insitd glazed door, S/Steel frame	Insulated glazed door, terra frame	Full door, terra	Insulated glazed door, S/Steel frame	Insitd glazed door, S/Steel frame/SmartSteel
Side walls	terra	terra	terra	stainless steel	terra	terra	silver	stainless steel with SmartSteel
Wine storage compartment								
Temperature zones/-range	1/+5°C to +20°C	1/+5°C to +20°C	1/+5°C to +20°C	1/+5°C to +20°C	1/+5°C to +20°C	1/+5°C to +20°C	1/+5°C to +20°C	1/+5°C to +20°C
Adjustable cooling circuits	1	1	1	1	1	1	1	1
Type of control/display	MagicEye/external digital	MagicEye/internal digital	MagicEye/internal digital	MagicEye/internal digital	MagicEye/internal digital	MagicEye/internal digital	MagicEye/internal digital	LCD Display/internal digital
Humidity control via	switchable ventilation	switchable ventilation	switchable ventilation	switchable ventilation	switchable ventilation	switchable ventilation	switchable ventilation	switchable ventilation
Forced air system	•	•	•	•	•	•	•	•
Defrosting	Automatic	Automatic	Automatic	Automatic	Automatic	Automatic	Automatic	Automatic
Interior light	•	•	LED	LED	LED	LED	•	LED
permanently activated/dimmable	• / -	• / -	• / -	• / -	• / -	• / -	• / -	• / •
Shelf material	wooden shelf	wooden shelf	wooden shelf	wooden shelf	wooden shelf	wooden shelf	grid shelves with front wooden panel	wooden shelf
Storage shelves	7	7	7	6	6	6	4	3
running on telescopic rails							3	
Height-adjustable shelves	•	•	•	•	•	•	•	•
Fault: warning signal	visual and audible	visual and audible	visual and audible	visual and audible	visual and audible	visual and audible	visual and audible	visual and audible
Door open: warning signal	audible	audible	audible	audible	audible	audible	audible	audible
Child lock function	•	•	•	•	•	•	•	•
Drawers for accessories								1
Dimensions								
Exterior/Aperture dimensions in cm (h/w/d ⁴)	193/74.7/75,9	192/70/74.2	192/70/74.2	165/70/74.2	165/70/74.2	165/70/74.2	82-87/60/at least 58	61.2/42.5/47.8
Interior dimensions in cm (h/w/d)	170/61.5/56	164/57.8/58.5	164/57.8/56	137/57.8/58.5	137/57.8/58.5	137/57.8/56	64/51/43.5	37/35/31
Features								
Interface	HomeDialog-ready	HomeDialog-ready	HomeDialog-ready	HomeDialog-ready	HomeDialog-ready	HomeDialog-ready		
Design	SwingLine	HardLine	HardLine	HardLine	HardLine	HardLine		HardLine
Slimline door handle	Aluminium handle	Aluminium handle	Aluminium handle	Aluminium handle	Aluminium handle	Aluminium handle	Stainless steel slimline door handle	
with integrated opening mechanism	•	•	•	•	•	•		
Door hinges	right, reversible	right, reversible	right, reversible	right, reversible	right, reversible	right, reversible	right, reversible	right fixed
Lock	•	•	•	•	•	•	•	•
Low-vibration compressor	•	•	•	•	•	•	•	•
Accessories (see page 38/39)	01, 03, 06, 07, 11	01, 03, 04, 06, 07, 11	01, 03, 04, 06, 07, 11	01, 03, 04, 06, 07, 09, 10, 11	01, 03, 04, 06, 07, 11	01, 03, 04, 06, 07, 11	01, 06, 09, 10	01, 06, 08

¹ These models are only intended for storing wine. Maximum DIN norm bordeaux bottles capacity (0.75 l) as per norm NF H 35-124 (H: 300.5 mm, Ø 76.1 mm)

² With +25°C ambient temperature, switched-off interior light and +12°C interior temperature. Commission Delegated Regulation (EU) No 1060/2010

³ Climate Ratings: SN +10°C to +32°C N +16°C to +32°C
ST +16°C to +38°C T +16°C to +43°C

⁴ incl. distance from wall



Wine storage cabinets GrandCru

WKEs 553 GrandCru

45



Max. No. of Bordeaux bottles 0.75 Ltr ¹	18
Total gross/net capacity	48/47 litre
Energy efficiency class	<A>
Energy consumption in 365 days/24 h ²	130/0.356 kWh
Noise level	35 dB(A)
Climate rating ³	SN
Voltage/Connection rating	220-240V~/0.5 A
Door	Insulated glazed door with stainless steel frame
Side walls	silver

Wine storage compartment

Temperature zones/-range	1/+5°C to +20°C
Adjustable cooling circuits	1
Type of control/display	LCD Display/internal digital
Humidity control via	switchable ventilation
Forced air system	•
Defrosting	Automatic
Interior light	LED
permanently activated/dimmable	•/•
Shelf material	wooden shelf
Storage shelves	3
running on telescopic rails	2
Fault: warning signal	visual and audible
Door open: warning signal	audible
Child lock function	•

Dimensions

Aperture dimensions in cm (h/w/d ⁴)	45/56/at least 55
Interior dimensions in cm (h/w/d)	34/46/31

Features

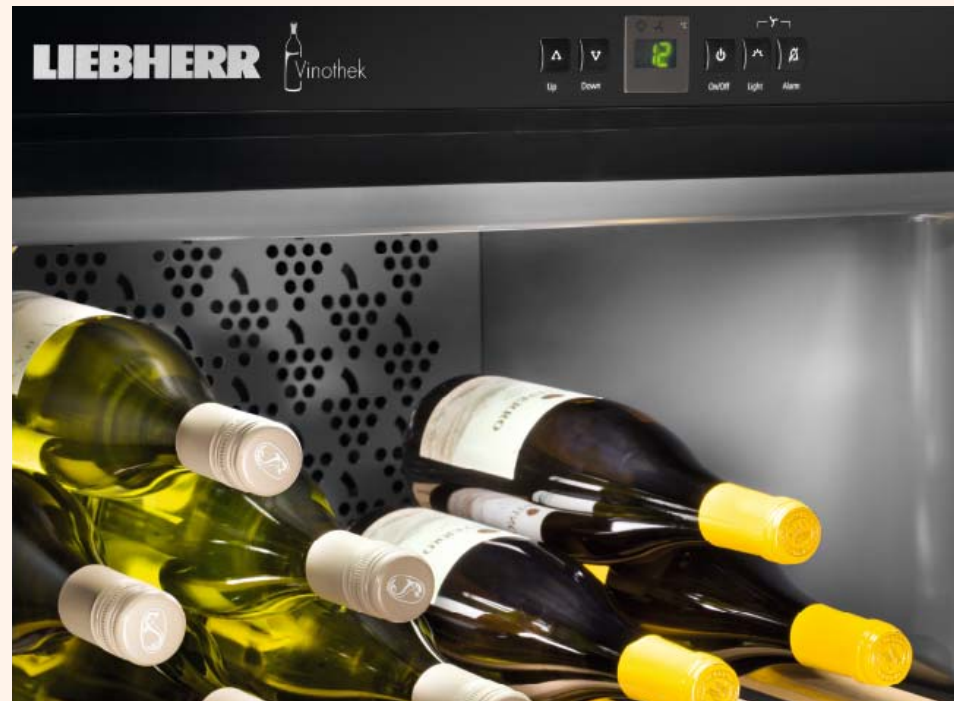
Handle	recessed grip
Door hinges	right, reversible
Vibration free compressor	•

Accessories (see page 38/39)

	01, 06, 09, 10
--	----------------

Wine storage cabinets Vinothek

Wine storage cabinets offer similar conditions to a wine cellar. They are therefore an ideal choice for both long-term storage and storage of large wine stocks, always achieving the perfect serving temperature. The temperature can be adjusted from $+5^{\circ}\text{C}$ to $+20^{\circ}\text{C}$ as appropriate, and is both even and constant throughout the entire appliance interior.



The precision **electronic control system** is clearly arranged in the insulation plate. The digital temperature display can be read from the outside of appliances with glass doors. The door and temperature alarm alerts the user to any irregularities, e.g. a door that has been left open. The child lock prevents any inadvertent changes to the control system.



For ideal presentation of your best wines, the **interior light** with separate switch in appliances

with glazed door.



The **tinted safety glass** in the Liebherr wine cabinets guarantees the essential UV protection for your fine wines. The **slimline door handle in black** is aesthetically pleasing and ergonomically designed for ease of opening.



The **bottle shelves, made of untreated wood** are variably height-adjustable to provide an optimum overview and a clear storage layout. Storing the bottles in opposite directions on the pull-out shelves permits full use of the capacity. The wooden shelves are designed to safely hold Bordeaux bottles.



The **clip-on labelling system** provides a quick and clear overview of your wine store. The labelled

cards can be easily inserted into the clips which can be attached as required.



Environmental odours can have an impact on wine stored for longer periods. Fresh air is supplied to Liebherr wine cabinets through the easily replaceable **activated charcoal filter** to ensure optimal air quality.



Wine storage cabinets Vinothek	WKb 4212 Vinothek	WKr 4211 Vinothek 	WKb 3212 Vinothek	WKr 3211 Vinothek 	WKb 1812 Vinothek	WKr 1811 Vinothek
Max. No. of Bordeaux bottles 0.75 Ltr ¹	200	200	164	164	66	66
Total gross/net capacity	427/401 litre	409/383 litre	336/314 litre	322/300 litre	151/134 litre	145/128 litre
Energy efficiency class	<A	<A	<A	<A	<A	<A
Energy consumption in 365 days/24 h ²	168/0.460 kWh	133/0.364 kWh	161/0.441 kWh	128/0.350 kWh	146/0.400 kWh	145/0.397 kWh
Noise level	41 dB(A)	41 dB(A)	40 dB(A)	40 dB(A)	40 dB(A)	40 dB(A)
Climate rating ³	SN-ST	SN-T	SN-ST	SN-T	SN-ST	SN-T
Voltage/Connection rating	220-240V~/1.2 A	220-240V~/1.0 A	220-240V~/1.0 A	220-240V~/1.0 A	220-240V~/1.0 A	220-240V~/1.0 A
Door	Insulated glazed door, black frame	Full door, bordeaux red	Insulated glazed door, black frame	Full door, bordeaux red	Insulated glazed door, black frame	Full door, bordeaux red
Side walls	black	black	black	black	black	black
Wine storage compartment						
Temperature zones/-range	1/+5°C to +20°C	1/+5°C to +20°C	1/+5°C to +20°C	1/+5°C to +20°C	1/+5°C to +20°C	1/+5°C to +20°C
Adjustable cooling circuits	1	1	1	1	1	1
Type of control/display	MagicEye/external digital	MagicEye/external digital	MagicEye/external digital	MagicEye/external digital	MagicEye/external digital	MagicEye/external digital
Humidity control via	switchable ventilation	switchable ventilation	switchable ventilation	switchable ventilation	switchable ventilation	switchable ventilation
Forced air system	•	•	•	•	•	•
Defrosting	Automatic	Automatic	Automatic	Automatic	Automatic	Automatic
Interior light	•	•	•	•	•	•
permanently activated/dimmable	•/-	•/-	•/-	•/-	•/-	•/-
Shelf material	wooden shelf	wooden shelf	wooden shelf	wooden shelf	zincd rails	zincd rails
Storage shelves	6	6	4	4	3	3
Height-adjustable shelves	•	•	•	•	•	•
Fault: warning signal	visual and audible	visual and audible	visual and audible	visual and audible	visual and audible	visual and audible
Door open: warning signal	audible	audible	audible	audible	audible	audible
Child lock function	•	•	•	•	•	•
Dimensions						
Exterior dimensions in cm (h/w/d ⁴)	165/60/73.9	165/60/73.9	135/60/73.9	135/60/73.9	89/60/61.3	89/60/61.3
Interior dimensions in cm (h/w/d)	146.6/50/56	146.6/50/56	116.6/50/56	116.6/50/56	71/50/44	71/50/44
Features						
Design	HardLine	HardLine	HardLine	HardLine	HardLine	HardLine
Handle	Slimline door handle black	Slimline door handle black	Slimline door handle black	Slimline door handle black	Slimline door handle black	Slimline door handle black
Door hinges	right, reversible	right, reversible	right, reversible	right, reversible	right, reversible	right, reversible
Low-vibration compressor	•	•	•	•	•	•
Accessories (see page 38/39)	01, 03, 06, 11	01, 03, 06, 11	01, 03, 06, 11	01, 03, 06, 11	01, 05, 06, 11	01, 05, 06, 11

¹ These models are only intended for storing wine. Maximum DIN norm bordeaux bottles capacity (0.75 l) as per norm NF H 35-124 (H: 300.5 mm, Ø 76.1 mm)

² With +25°C ambient temperature, switched-off interior light and +12°C interior temperature. Commission Delegated Regulation (EU) No 1060/2010

³ Climate Ratings: SN +10°C to +32°C N +16°C to +32°C
ST +16°C to +38°C T +16°C to +43°C

⁴ incl. distance from wall

Multi-temperature wine cabinets Vinothek

Multi-temperature wine cabinets are especially suited for storing different types of wine at their respective drinking temperatures. These appliances incorporate a special climate control system that can layer the temperatures. In the upper zone, for example, red wine can be kept at +18 °C while the lower zone, set at an ambient temperature of +5 °C, will be particularly suitable for sparkling wine or champagne.



The wine cabinets are equipped with an accurate **electronic control system** with digital temperature display. These appliances incorporate a special climate control system that can layer the temperatures. In the upper zone, for example, red wine can be kept at +16 °C to +18 °C while the lower zone is set at an ambient temperature of +5 °C to +7 °C.



Ideal humidity via Lava stone. The humidity in the Vinothek models can be increased by using Lava stone.



Multi-temperature wine cabinets Vinothek

Max. No. of Bordeaux bottles 0.75 Ltr ¹	200	200
Total gross/net capacity	427 / 401 litre	409 / 383 litre
Energy efficiency class	<A>	<A>
Energy consumption in 365 days / 24 h ²	168 / 0.460 kWh	167 / 0.457 kWh
Noise level	40 dB(A)	40 dB(A)
Climate rating ³	SN-ST	SN-ST
Voltage / Connection rating	220-240V~ / 1.2 A	220-240V~ / 1.2 A
Door	Insulated glazed door, black frame	Full door, bordeaux red
Side walls	black	black

Wine storage compartment

Temperature range	+5°C to +18°C	+5°C to +18°C
Adjustable cooling circuits	1	1
Type of control / display	MagicEye / external digital	MagicEye / external digital
Humidity control via	Lava stone	Lava stone
Defrosting	Automatic	Automatic
Interior light	• permanently activated / dimmable	• / -
Shelf material	wooden shelf	wooden shelf
Storage shelves	6	6
Height-adjustable shelves	•	•
Fault: warning signal	visual and audible	visual and audible
Door open: warning signal	audible	audible
Child lock function	•	•

Dimensions

Exterior dimensions in cm (h/w/d ⁴)	165/60/73.9	165/60/73.9
Interior dimensions in cm (h/w/d)	146.6/50/56	146.6/50/56

Features

Design	HardLine	HardLine
Handle	Slimline door handle black	Slimline door handle black
Door hinges	right, reversible	right, reversible
Low-vibration compressor	•	•

Accessories (see page 38/39)

01, 02, 03, 06, 11	01, 02, 03, 06, 11
--------------------	--------------------

WTb 4212 Vinothek

WT-4211 Vinothek

01

Active carbon filter

During prolonged storage, wines are sensitive to any odours that contaminate the storage environment. Liebherr appliances benefit from optimum air quality and freshness thanks to the easy-to-replace active carbon filter which is integrated into all wine cabinets.



WKes 653	7440 699	All other free-standing and built-in wine appliances	7433 243
----------	----------	--	----------

02

Retrofit lava stone kit

The humidity in the Vinothek multi-temperature wine cabinets can be increased as required using lava stones.



WTb 4212; WTr 4211	9590 785
--------------------	----------

03

Wooden shelf

The handcrafted shelf, made from natural wood, is the perfect accessory for safely storing Bordeaux bottles. Positioning the bottles in opposite directions enables full use of the shelf's capacity.



GrandCru WTt 55; WKT/es 45	7112 159	Vinothek WKb/r 42; WKb/r 32; WTB/r 42	7112 113
----------------------------	----------	---------------------------------------	----------

04

Presentation shelf (wooden folding shelf)

The shelf can be used to present exquisite wines, or to safely store already-opened bottles.



Vinidor WTes 59; WTes 58	7112 043	GrandCru WKT 55; WKT/es 45	7113 619
--------------------------	----------	----------------------------	----------

05

Galvanised grill shelf

Grill shelf for additional requirements.



WKb/r 18	7112 035
----------	----------

06

Clip-on labelling system

The clip-on labelling system provides a quick and clear overview of your wine store. The labelled cards can be easily inserted into the clips which can be attached as required.



Clip-on labelling for wooden shelves (5 pieces)	9086 709
Clip-on labelling for grill shelves WKb/r 18 (2 pieces)	9086 723

07

HomeDialog slave module

HomeDialog can be used to display, manage and control up to six appliances via the display screen on the PremiumPlus combination fridge-freezers. The appliance to be networked requires a HomeDialog slave module to communicate with the master appliance.



WTes 59, 58; WTpes 59; WKT 64; WKT 55; WKes/t 45	9988 074
Retrofit kit additionally required	9590 585

08

Underside cover for wall mounting

Covers the underside, enabling compact appliances to be attractively wall mounted without their underside being visible.



WKes 653	9590 519
----------	----------

09

Stainless steel cleaner

The stainless steel cleaner reliably and gently removes fingerprints, streaks, and stains from stainless steel surfaces. It cleans quickly, without streaking, and also prevents the subsequent accumulation of stubborn dirt. (Not suitable for use on SmartSteel fronts.)



250 ml es-models (stainless steel without SmartSteel)	8409 022
---	----------

10

Stainless steel polish

For polishing stainless steel surfaces after they have been cleaned (do not use on SmartSteel).



50 ml es-models (stainless steel without SmartSteel)	8409 028
250 ml es-models (stainless steel without SmartSteel)	8409 030

11

Lock

The lock prevents unwanted access. Simply assemble on the housing with chest freezers and Vinothek wine cabinets. A lock is integrated into the side of the door of the freestanding wine cabinets Vinidor and GrandCru as standard. If two wine cabinets are set up side by side, the operation of the sideways lock is limited. In this case an additional lock can be fitted below.



Vinidor, GradCru	9086 413
Vinothek	9086 415